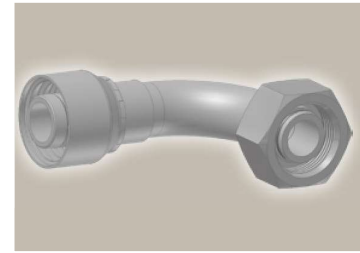
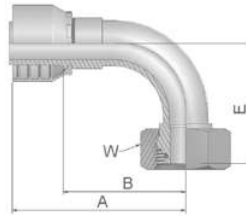


# 1C Female Metric 24° – Swivel Heavy Series with O-Ring 90° Elbow

ISO 12151-2-SWE-S – DKOS 90°



| Part Number |             | Hose I.D. |       |      |      | Thread  | Tube    | A   | B   | E   | W  |
|-------------|-------------|-----------|-------|------|------|---------|---------|-----|-----|-----|----|
| 46 series   | 48 series   | DN        | Inch  | Size | mm   | metric  | O.D. mm | mm  | mm  | mm  | mm |
| 11C46-6-4   | 11C48-6-4   | 6         | 1/4   | -4   | 6.4  | M14x1.5 | 6       | 62  | 39  | 32  | 17 |
| 11C46-8-4   | 11C48-8-4   | 6         | 1/4   | -4   | 6.4  | M16x1.5 | 8       | 50  | 26  | 29  | 19 |
| 11C46-10-4  | 11C48-10-4  | 6         | 1/4   | -4   | 6.4  | M18x1.5 | 10      | 50  | 26  | 29  | 22 |
| 11C46-12-4  | 11C48-12-4  | 6         | 1/4   | -4   | 6.4  | M20x1.5 | 12      | 60  | 38  | 30  | 24 |
| 11C46-10-5  | 11C48-10-5  | 8         | 5/16  | -5   | 7.9  | M18x1.5 | 10      | 60  | 36  | 31  | 22 |
| 11C46-12-5  | 11C48-12-5  | 8         | 5/16  | -5   | 7.9  | M20x1.5 | 12      | 60  | 36  | 32  | 24 |
| 11C46-10-6  | 11C48-10-6  | 10        | 3/8   | -6   | 9.5  | M18x1.5 | 10      | 59  | 37  | 36  | 22 |
| 11C46-12-6  | 11C48-12-6  | 10        | 3/8   | -6   | 9.5  | M20x1.5 | 12      | 58  | 35  | 37  | 24 |
| 11C46-14-6  | 11C48-14-6  | 10        | 3/8   | -6   | 9.5  | M22x1.5 | 14      | 58  | 35  | 37  | 27 |
|             | 11C48-16-6  | 10        | 3/8   | -6   | 9.5  | M24x1.5 | 16      | 63  | 38  | 40  | 30 |
|             | 11C48-12-8  | 12        | 1/2   | -8   | 12.7 | M20x1.5 | 12      | 63  | 39  | 44  | 24 |
| 11C46-14-8  | 11C48-14-8  | 12        | 1/2   | -8   | 12.7 | M22x1.5 | 14      | 62  | 38  | 42  | 27 |
| 11C46-16-8  | 11C48-16-8  | 12        | 1/2   | -8   | 12.7 | M24x1.5 | 16      | 61  | 37  | 45  | 30 |
| 11C46-20-8  | 11C48-20-8  | 12        | 1/2   | -8   | 12.7 | M30x2   | 20      | 61  | 37  | 46  | 36 |
| 11C46-16-10 | 11C48-16-10 | 16        | 5/8   | -10  | 15.9 | M24x1.5 | 16      | 66  | 41  | 48  | 30 |
| 11C46-20-10 | 11C48-20-10 | 16        | 5/8   | -10  | 15.9 | M30x2   | 20      | 65  | 40  | 48  | 36 |
| 11C46-25-10 | 11C48-25-10 | 16        | 5/8   | -10  | 15.9 | M36x2   | 25      | 76  | 51  | 52  | 46 |
| 11C46-20-12 | 11C48-20-12 | 19        | 3/4   | -12  | 19.1 | M30x2   | 20      | 79  | 54  | 58  | 36 |
| 11C46-25-12 | 11C48-25-12 | 19        | 3/4   | -12  | 19.1 | M36x2   | 25      | 80  | 54  | 59  | 46 |
|             | 11C48-30-12 | 19        | 3/4   | -12  | 19.1 | M42x2   | 30      | 80  | 55  | 61  | 50 |
| 11C46-25-16 | 11C48-25-16 | 25        | 1     | -16  | 25.4 | M36x2   | 25      | 102 | 72  | 71  | 46 |
| 11C46-30-16 | 11C48-30-16 | 25        | 1     | -16  | 25.4 | M42x2   | 30      | 104 | 75  | 75  | 50 |
|             | 11C48-30-20 | 31        | 1 1/4 | -20  | 31.8 | M42x2   | 30      | 130 | 83  | 86  | 50 |
| 11C46-38-20 |             | 31        | 1 1/4 | -20  | 31.8 | M52x2   | 38      | 124 | 86  | 80  | 60 |
|             | 11C48-38-20 | 31        | 1 1/4 | -20  | 31.8 | M52x2   | 38      | 130 | 83  | 78  | 60 |
|             | 11C48-38-24 | 38        | 1 1/2 | -24  | 38.1 | M52x2   | 38      | 139 | 101 | 101 | 60 |

46/48 Series

Hose fittings are delivered with ozone resistant Nitrile (NBR) O-ring as a standard version, Working temperature from -40 °C up to +105 °C. Hose fittings with special O-rings (Viton or EPDM) available on request. O-ring dimensions and part-numbers see in section Eb.

Approved **fitting series** for hose types, depending on size: Also available in stainless steel. Details can be found in CAT 4400.1/UK

|                        |       |       |       |       |       |         |            |       |       |     |       |       |            |       |       |     |     |
|------------------------|-------|-------|-------|-------|-------|---------|------------|-------|-------|-----|-------|-------|------------|-------|-------|-----|-----|
| <b>46</b> or <b>48</b> | 441   | 461LT | 462   | 462TC | 462ST | 629PU   | 692PU Twin |       |       |     |       |       |            |       |       |     |     |
| <b>46</b>              | 463   | 492   | 492ST | 492TC | 692   | 692Twin | 692TC      | BCH1  |       |     |       |       |            |       |       |     |     |
| <b>48</b>              | 301SN | 304   | 387   | 387ST | 387TC | 421RH   | 421SN      | 426   | 421TC | 436 | 441RH | 462PU | 462PU Twin | BCH2  | HT2   | ... |     |
|                        | 471TC | 477   | 477ST | 477TC | 477RH | 487     | 487ST      | 487TC | 493   | 787 | 787TC | 787ST | 797        | 797TC | 797ST | 811 | 881 |